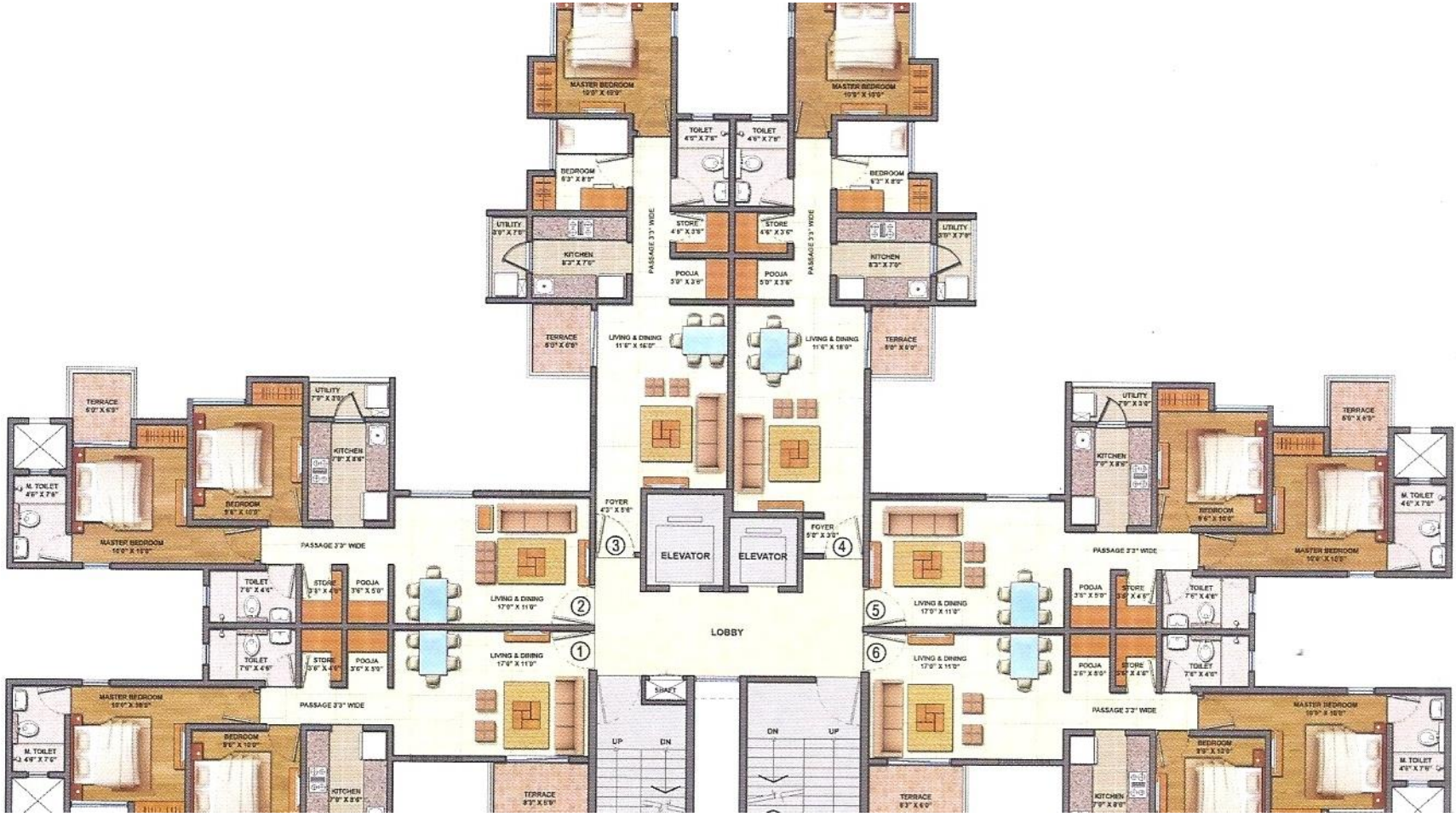


Assessment of complex building for CBRN contamination – sampling strategy



Statements / Questions

- Dispersion of CBRN agents in a complex building is heterogeneous.
- Dispersion of CBRN agents in a complex building can be modelled / predicted.
- Sampling strategy is as important or more than method for sampling and method for testing.

Statements / Questions (2)

- There are no current guidelines for definition of sampling strategy for the assessment of a CBRN contaminated building?
- To what extend harmonisation of sampling strategy is needed, realistic?
- What are the main benefits expected from harmonisation?
- How to proceed ? Where is the expertise ?